

● **Standard pitch electro-permanent magnetic chuck**

Use:

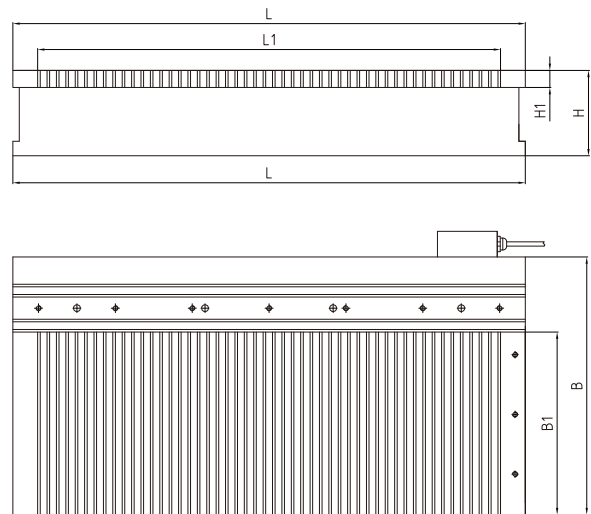
For universal clamping with higher magnetic force

Features:

- Pole pitch 3+16 mm
- Highest clamping force up to 140 N/cm²
- Electro-permanent technology with no deformation owing to the rise of the temperature
- Can eliminate the residual magnetism from the workpiece
- Solid top plate with high precision
- Minimum mechanical deformation with solid one-piece housing

Model	Width (B)	Length (L)	B2	Height	L1	H1	Controller (400V)	Net Weight
EPD-1530	150 (5.91)	300 (11.81)	144 (5.67)	80 (3.15)	237 (9.33)	27 (1.06)	CGA	25 kg / 55 lb
EPD-1535	150 (5.91)	350 (13.78)	144 (5.67)	80 (3.15)	291 (11.46)	27 (1.06)	CGA	29 kg / 64 lb
EPD-1540	150 (5.91)	400 (15.75)	144 (5.67)	80 (3.15)	345 (13.58)	27 (1.06)	CGA	34 kg / 75 lb
EPD-1545	150 (5.91)	450 (17.72)	144 (5.67)	80 (3.15)	381 (15.00)	27 (1.06)	CGA	38 kg / 84 lb
EPD-2040	204 (8.03)	400 (15.75)	200 (7.87)	85 (3.35)	345 (13.58)	27 (1.06)	CGA	51 kg / 112 lb
EPD-2045	204 (8.03)	450 (15.75)	200 (7.87)	85 (3.35)	381 (15.00)	27 (1.06)	CGA	57 kg / 126 lb
EPD-2050	204 (8.03)	500 (19.69)	200 (7.87)	85 (3.35)	435 (17.13)	27 (1.06)	CGA	63 kg / 139 lb
EPD-2550	250 (9.84)	500 (19.69)	194 (7.64)	85 (3.35)	435 (17.13)	27 (1.06)	CGA	70 kg / 153 lb
EPD-3060	304 (11.97)	600 (23.62)	300 (11.81)	85 (3.35)	543 (21.38)	27 (1.06)	CGA	114 kg / 251 lb
EPD-4080	404 (15.91)	800 (31.50)	400 (15.75)	85 (3.35)	741 (29.17)	27 (1.06)	CGA	203 kg / 446 lb
EPD-40100	404 (15.91)	1000 (39.37)	400 (15.75)	85 (3.35)	939 (36.97)	27 (1.06)	CGA	254 kg / 558 lb
EPD-40150	404 (15.91)	1500 (59.05)	400 (15.75)	85 (3.35)	1443 (56.81)	27 (1.06)	CGA	380 kg / 837 lb
EPD-5080	504 (19.84)	800 (31.50)	500 (19.69)	85 (3.35)	741 (29.17)	27 (1.06)	CGA	254 kg / 558 lb
EPD-50100	504 (19.84)	1000 (39.37)	500 (19.69)	85 (3.35)	939 (36.97)	27 (1.06)	CGA	317 kg / 697 lb
EPD-50150	504 (19.84)	1500 (59.05)	500 (19.69)	85 (3.35)	1443 (56.81)	27 (1.06)	CGA	475 kg / 1046 lb
EPD-50200	504 (19.84)	1000 (39.37)*2	500 (19.69)	85 (3.35)	939 (36.97)*2	27 (1.06)	CGD	634 kg / 1395 lb
EPD-6080	604 (23.78)	800 (31.50)	600 (23.62)	85 (3.35)	741 (29.17)	27 (1.06)	CGA	304 kg / 669 lb
EPD-60100	604 (23.78)	1000 (39.37)	600 (23.62)	85 (3.35)	939 (36.97)	27 (1.06)	CGA	380 kg / 837 lb
EPD-60150	604 (23.78)	1500 (59.05)	600 (23.62)	85 (3.35)	1443 (56.81)	27 (1.06)	CGA	570 kg / 1255 lb
EPD-60200	604 (23.78)	1000 (39.37)*2	600 (23.62)	85 (3.35)	939 (36.97)*2	27 (1.06)	CGD	761 kg / 1673 lb

Unit: mm(in)



- Standard pitch electro-permanent magnetic chuck

Use:

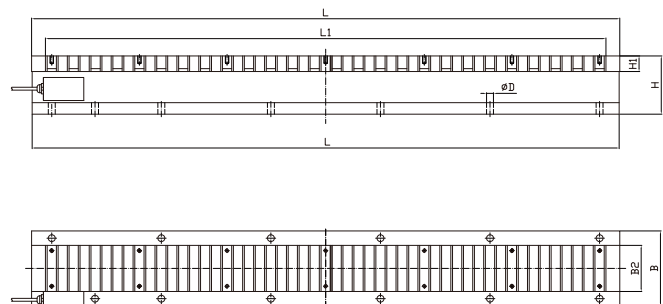
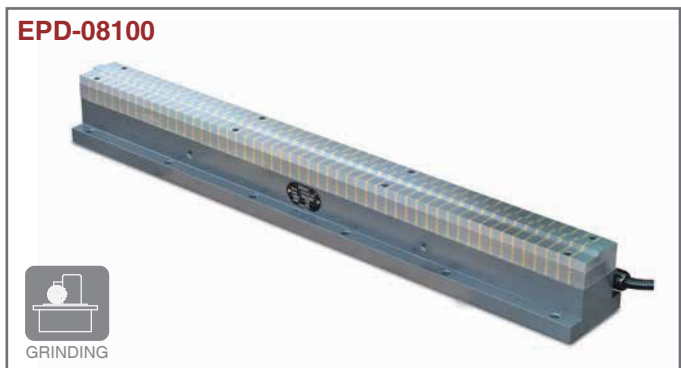
For sliding block clamping with extra clamping force on the back step

Features:

- Pole pitch 3+8 mm
- Highest clamping force up to 140 N/cm²
- Electro-permanent technology with no deformation owing to the rise of the temperature
- Can eliminate the residual magnetism from the workpiece
- Solid top plate with high precision
- Minimum mechanical deformation with solid one-piece housing

Model	Width(B)	Length(L)	Height(H)	B1	L1	H1	Controller (220/400V)	Net Weight
EPD-3060-RL	302 (11.88)	600 (23.62)	100 (3.94)	241 (9.49)	542 (21.3)	20 (0.78)	CGA	150 kg / 330 lb

Unit: mm(in)



- Standard pitch electro-permanent magnetic chuck

Use:

For linear guide rail clamping

Features:

- Pole pitch 3+16 mm
- Highest clamping force up to 140 N/cm²
- Electro-permanent technology with no deformation owing to the rise of the temperature
- Can eliminate the residual magnetism from the workpiece
- Solid top plate with high precision
- Minimum mechanical deformation with solid one-piece housing

Model	Width(B)	Length(L)	Height(H)	B2	L1	H1	Controller (220/400V)	Net Weight
EPD 08100	130 (5.12)	1020 (40.16)	101 (3.98)	80 (3.15)	972 (38.27)	27 (1.06)	CGA	70 kg / 154 lb

Unit: mm(in)